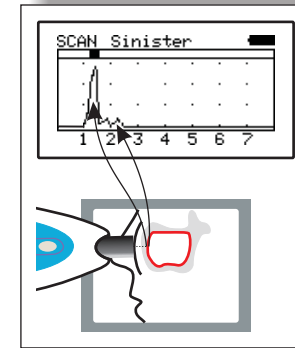
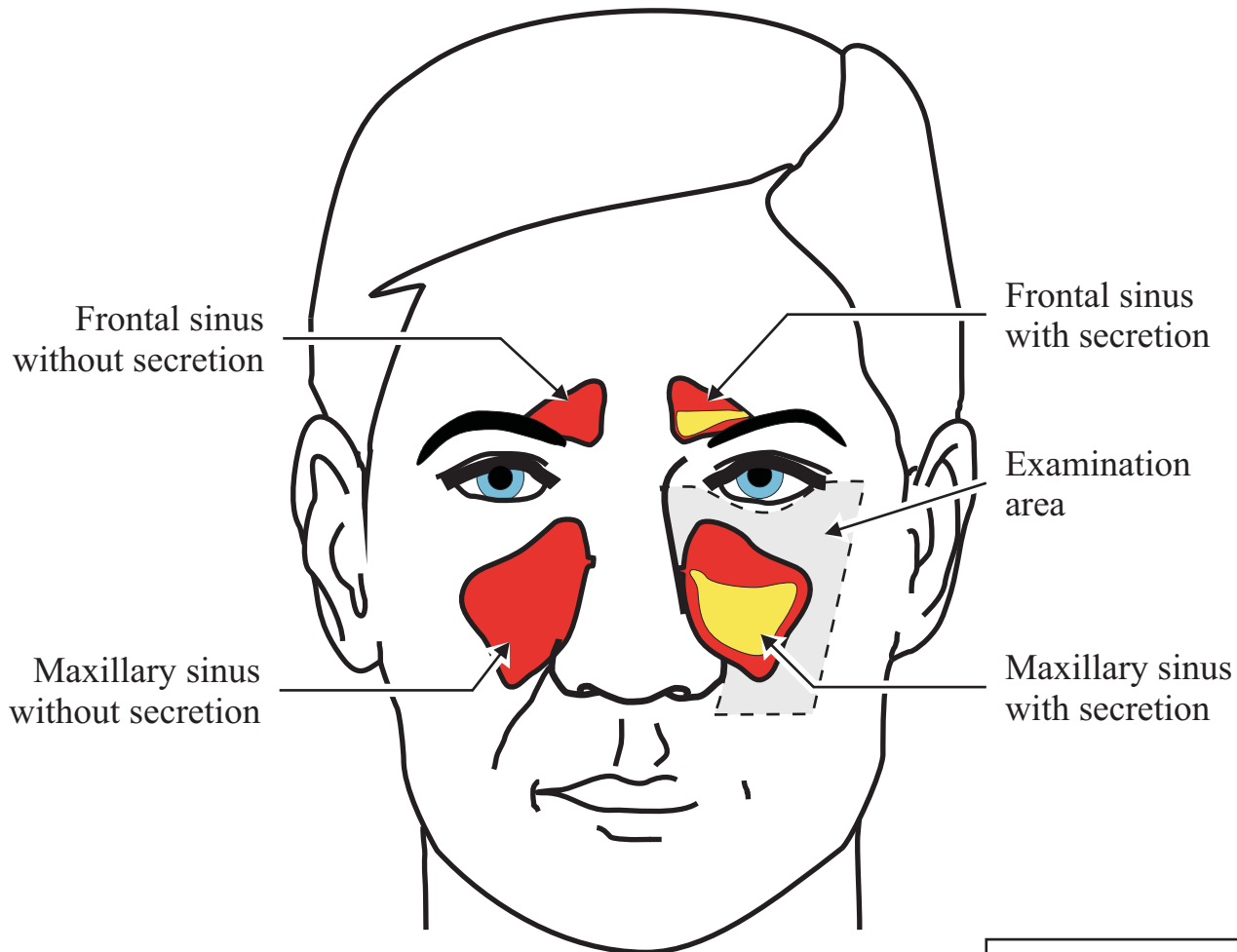
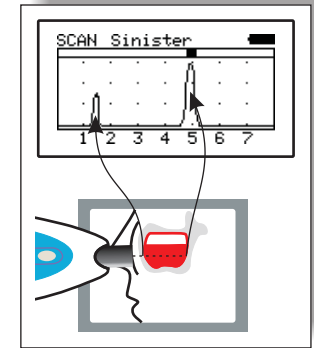


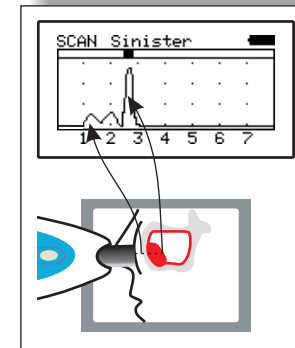
SINUSCAN 201 Quick Reference Guide



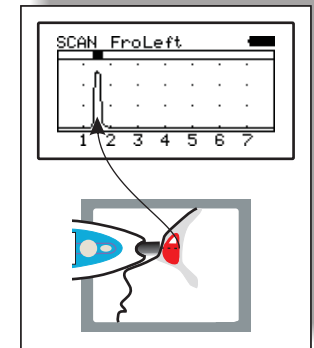
Normal maxillary sinus.
No indication or indication
between 0 and 1,5 cm.
Negative indication



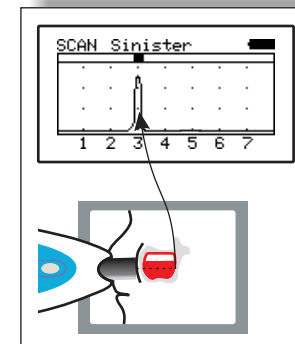
Secretion in the maxillary
sinus. Indication between
3,5 and 6 cm.
Positive indication



Cyst or polyp in the
maxillary sinus. Indication
between 2 and 3 cm.



Secretion in the frontal sinus.
Indication between 1 and
3 cm.
Positive indication



Secretion in the maxillary
sinus of a child. Indication
between 2 and 4 cm.
Positive indication

CE 0537
Manufacturer:
Mediq Suomi Oy
Luomanportti 3
FI-02200 ESPOO
FINLAND